

ISSF Prone Women – Wertung **Women**

StartNr: 183

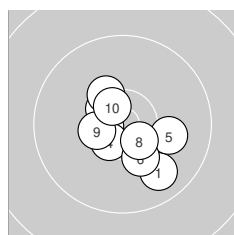
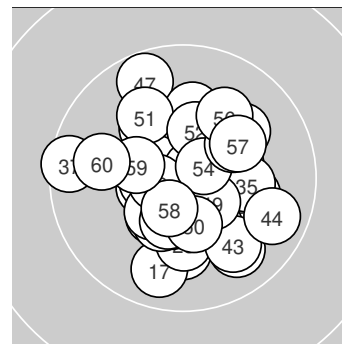
StandNr: 45

1. Mai 2022 12:54

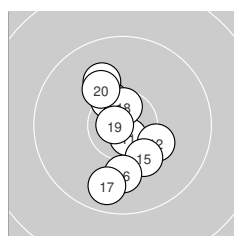
Kowalczyk, Karolina #44253419

Polen

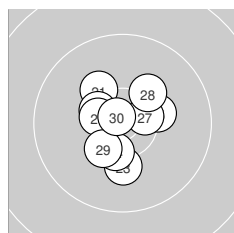
Ergebnis: **618.9** (593)
 Serien: 103.7 103.0 103.9 102.9 102.7 102.7
 Zähler: 53 7 0 0 0 0 0 0 0
 Innenzehner: 34
 Weitester: 1134 (37.), 1028 (47.), 961 (44.)
 beste Teiler: 118.0 (19.), 129.4 (42.), 130.2 (30.)
 Trefferlage: 0.09 mm rechts, 0.01 mm hoch
 Streuwert: 3.97, horizontal: 3.85, vertikal: 4.10



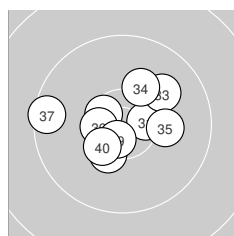
Serie 1:
 9.8 ↘ 10.6 * 10.5 * 10.5 * 10.1 →
 10.3 ↘ 10.3 * 10.5 * 10.5 * 10.6 *
 beste Teiler: 266.4 (2.), 305.6 (10.), 325.4 (4.)
 Trefferlage: 0.22 mm rechts, 1.06 mm tief
 Streuwert: 3.65, horizontal: 3.80, vertikal: 3.50



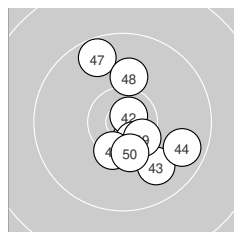
Serie 2:
 10.7 * 10.2 ↘ 10.4 * 10.1 ↖ 10.2 ↘
 10.0 ↓ 9.8 ↓ 10.6 * 10.8 * 10.2 ↖
 beste Teiler: 118.0 (19.), 196.3 (11.), 277.3 (18.)
 Trefferlage: 0.26 mm links, 0.71 mm tief
 Streuwert: 4.21, horizontal: 2.69, vertikal: 5.31



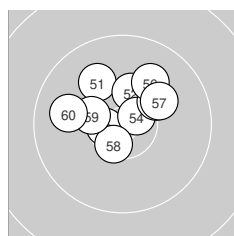
Serie 3:
 10.2 ↖ 10.4 * 10.2 ↓ 10.4 * 10.3 →
 10.5 * 10.5 * 10.2 ↗ 10.4 * 10.8 *
 beste Teiler: 130.2 (30.), 348.8 (27.), 377.6 (26.)
 Trefferlage: 0.33 mm links, 0.13 mm hoch
 Streuwert: 3.55, horizontal: 3.35, vertikal: 3.75



Serie 4:
 10.5 * 10.6 * 10.0 ↗ 10.2 ↗ 10.2 →
 10.5 * 9.5 ← 10.3 * 10.7 * 10.4 *
 beste Teiler: 239.7 (39.), 319.4 (32.), 344.5 (31.)
 Trefferlage: 0.52 mm links, 0.25 mm hoch
 Streuwert: 4.37, horizontal: 5.30, vertikal: 3.19



Serie 5:
 10.6 * 10.8 * 9.9 ↘ 9.7 ↘ 10.6 *
 10.4 * 9.7 ↖ 10.1 ↑ 10.5 * 10.4 *
 beste Teiler: 129.4 (42.), 288.1 (41.), 320.4 (45.)
 Trefferlage: 1.73 mm rechts, 0.95 mm tief
 Streuwert: 4.40, horizontal: 3.42, vertikal: 5.20



Serie 6:
 10.0 ↖ 10.3 * 10.6 * 10.7 * 10.2 ↗
 10.0 ↗ 10.1 ↗ 10.5 * 10.4 * 9.9 ←
 beste Teiler: 238.2 (54.), 263.6 (53.), 327.6 (58.)
 Trefferlage: 0.25 mm links, 2.46 mm hoch
 Streuwert: 3.81, horizontal: 4.53, vertikal: 2.92

